



\$428,585 ~ Fixed Price (No More To Pay)

4 | 2 | 2

Lot 49, New Road, Ulmarra Estate,
UPPER CABOOLTURE.

Land \$187,000 | Home \$241,585

*T&C Apply

TERRIGAL 190 | TRADITIONAL FACADE

Land 454 m² | Home 191.07 m²

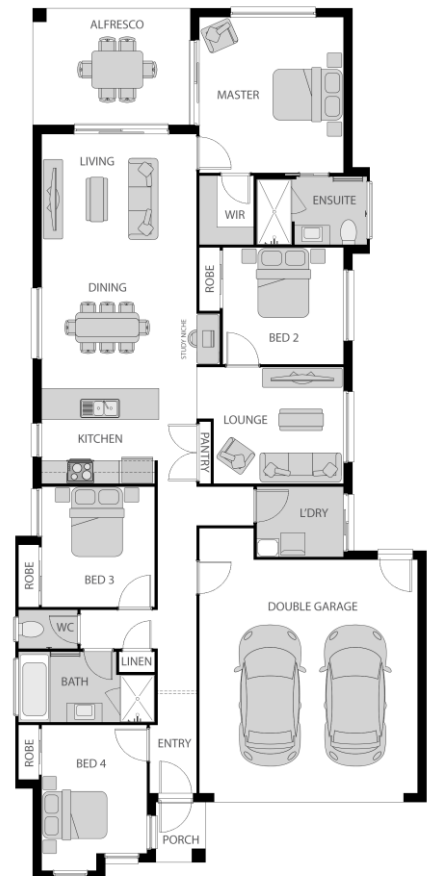
- ✓ Facade as shown
- ✓ Site works included
- ✓ Covenant requirements included
- ✓ **2 x split system Air-Conditioning**
- ✓ **Lifetime Structural Warranty**
- ✓ **12 Months Maintenance Period**
- ✓ **TRUECORE Steel Frame & Trusses**
- ✓ **Colorbond Roof**
- ✓ Wall-mounted clothesline, Letterbox & TV antenna
- ✓ **Fully Turfed to suit Block size & Garden Bed**
- ✓ Exposed aggregate driveway and path to entry
- ✓ **Tiled Porch and Alfresco**
- ✓ Screens throughout & Blinds
- ✓ Fully Fenced & with Single Gate
- ✓ Quality carpet and tiles
- ✓ **Stone Top to Kitchen**
- ✓ **Bulkheads to Overhead Kitchen Cupboards**
- ✓ **Dishwasher Included**
- ✓ LED Downlights
- ✓ **3 x TV Points**
- ✓ Structural slab to Alfresco and Porch
- ✓ Ceiling Fans to Bedrooms & Alfresco
- ✓ Exhaust Fans to Showers
- ✓ Includes Council fees
- ✓ Panelift automatic garage door with 3 remotes
- ✓ **NBN system with lead in**
- ✓ Price valid for 20 weeks
- ✓ **MOVE IN WITH NOTHING TO DO**

Ask us about more home designs available for this home site.

Contact: Murray McCrea or Rino Borzillo

murray@mccreaagencies.com or rinob@mccreaagencies.com

M: Murray 0408 788 202 or **M: Rino** 0402 356 316



~Fixed price applies to Build Corporation Home and Land Packages only.

All plans and Facades are copyright and no part may be used, copied or reproduced in any form without permission from Builders that McCrea Agencies work with. All measurements are to be used as a guide only and may differ from what is shown dependant on Façade. Plan is subject to approval by the Principal Developer and Local Authorities. Floorplan is indicative only and subject to change at any time without notice. Photos may depict fixtures, finishes and features such as structural landscaping, timber decking, façade features, interior furnishings, customer cabinetry & window upgrades that do not form part of the standard inclusions by Builder. Some photos included reflect display homes and not standard finishes, for a full list of inclusions speak to a Sales Contact. The Builder reserves the right to alter pricing or inclusions at any time. *T&C Apply with relation for Land Rebates and Finance (6 Month good rental history, earning \$75,000+ per year (Single or Couples), Eligible for First Home Owners Grant. (Terms, Conditions and Lending Criteria Apply). **We can also assist investors and 2nd and 3rd home buyers in most cases.**

Standard Inclusions

Pre-Construction

- *Home Owners Warranty Insurance.
- *Price is Based on a fully serviced standard lot up to 500m² with maximum 500mm fall across the building envelope.
- *Certified Soil and Wind Rating Certificate.
- *Contour Survey.
- *Concrete Slab to Engineers Design.
- *Building Certification Fees, Plumbing, Drainage Fees Including inspections.
- *Basix Compliant (Where Applicable).
- *12 Months Minor Defects Warranty (refer clause 24).
- *Lifetime Structural Warranty (conditions apply).

Termite Protection & Framing

- *Penetrations, perimeter and control joints protected by Physical Barriers.
- *Engineered, Pre-Fabricated Steel Frame and Trusses.
- *N2 Wind Rating.

External

- *Roof Pitch 22.5 Degrees.
- *Colorbond Metal Fascia and Gutters.
- *Colorbond Roof.
- *Aluminium Sliding Windows and Sliding Doors with Keyed Locks.
- *Wall Wrap to External Walls.
- *R1.5 Insulation Batts to Lightweight Cladded Areas.
- *Bricks from Selected Builders Range.
- *Natural Mortar with round ironed joints.
- *Colorbond Sectional Garage Door with Remote Control And 3 Transmitters.
- *Feature Front Entry Door.
- *Lever Entrance Set including Double Cylinder Deadlock To all Hinged External Doors.
- *Rinnai B26 Continuous, Gas HWS.
- *Painted PVC Downpipes.
- *2 External Garden Taps.
- *3 External Yard Gullies.

Internal

- *2440mm Ceiling Height.
- *R2.5 Insulation Batts to Ceiling excluding Porch.
- *10mm Plasterboard to Walls and Ceilings unless noted otherwise.
- *90mm Cove Cornice throughout.
- *66mm x 11mm Skirting.
- *42mm x 11mm Architrave.
- *Lever Internal Passage Sets with Privacy Latches to Bathroom, WC and Ensuite.
- *White Cushion Door Stops as Required.
- *Built-in Linen Cupboards with 4 Melamine Shelves.
- *Built in Wardrobes with aluminium framed sliding Doors and pre-finished vinyl fronts, one melamine shelf and hanging rail to all bedrooms and Walk in Robe to Bed 1.
- *Flat Acrylic Paint Finish to all Ceilings.
- *Three Coat Paint System to all Internal Walls.
- *Gloss Enamel Finish to all Door and Woodwork.

Two Storey Designs Only

- *R1.5 Insulation Batts to Lightweight Cladded areas.
- *Internal Stairs consist of Carpet Grade Treads, Risers and Landing with plasterboard dwarf wall & painted Timber Cap.

Kitchen

- *Kitchen Joinery with Melamine Cabinetry, Soft Close Drawers & Doors and Stainless-Steel Handles.
- *Laminated Front with PVC Square Edge Doors.
- *20mm Engineered Stone Bench Tops from selected Builders Range.
- *Ceramic Tile Splash Back 600mm High above Bench Top.
- *Kitchen Bulkhead and Microwave Provision (design specific).
- *1 ¾ Bowl Stainless Steel Sink.
- *Chrome Plate Sink Mixer
- *600mm Technika Multifunction Oven.
- *600mm Technika Ceramic Electric Cooktop.
- *600mm Technika Slide-Out Recirculating Rangehood
- *600mm Technika Freestanding Dishwasher.

Standard Inclusions

Bathroom, Ensuite and WC

- *Obscure Glazing to Windows.
- *2 Door Vanity Unit with Melamine Cabinetry
Stainless Steel Handles.
- *Laminated Front with PVC Square Edge Doors.
- *Laminated Post Form Vanity Top.
- *Ceramic Wall and Floor Tiles from selected
Builders Range.
- *Semi Framed Pivot Shower Screen with
Laminated Glass.
- *Frameless Polished Edge Mirror above Vanity.
- *1675mm Acrylic Bath where applicable.
- *Drop in Counter Vanity Basin.
- *Dual Flush Toilet Suite.
- *Chrome Plate Basin Mixer to Vanity Unit.
- *Shower Rail with Wall Mixer.
- *Wall Mixer with Chrome Plate Bath Spout.
- *Chrome Plate Towel Rail and Toilet Holder.

Laundry

- *Ceramic Tiled Floor.
- *Ceramic Skirting Tile.
- *Ceramic Tile Splashback.
- *45 Litre Stainless Steel Tub and Metal Cabinet.
- *Chrome Plate Flick Mixer.
- *Chrome Plate Washing Machine Stops.

Dual Living Inclusions – Where Applicable

- *Electricity-2 Single Phase Power Supply with 2 Meters
Installed into one meterbox. Meters are billed
Individually.
- *Phone – An Individual Telephone Line is installed
per Dwelling.
- *Water – One meter service to the main dwelling, with
a private meter for the second dwelling.
- *Sewer – One connection to the sewer main per
Dwelling.

PLEASE NOTE:

The Builder reserves the rights to alter designs and Specifications and substitute the make, model or type of any standard inclusion to a product of equivalent standard without notice.

Electrical

- *LED Down Lights as per Electrical Plan.
- *Fluorescent Light to Garage.
- *Power Points as per Electrical Plan.
- *TV Points to Living areas, Bedroom 1 and Media Room
(where applicable).
- *1 x Phone Point to Kitchen.
- *Exhaust Fan to Showers.
- *Selected Ceiling Fan and 2 LED Lights to Bedrooms.
- *Selected Ceiling Fan and 2 LED Lights to Alfresco.
- *Smoke Detectors Hard Wired with Backup Battery.
- *Communications distribution box for NBN/FTTH. Lead
In from street to house connection point. Lead in house
Connection point to cabinet installed in garage.
Note-there is no allowance for connection of NBN
or Phone to the home.

Turnkey Inclusions

- *Builder's Selection Carpet to Lounge, Family, Media
and all Bedrooms.
- *Floor Tiles to Entry, Dining, Living and Hallway, from
Selected Builders Range.
- *Flyscreens to all Windows.
- *Barrier Screens to External Doors and Sliding Doors
excluding Garage.
- *Roller Blinds to all Windows and Sliding Doors.
- *Wall Mounted Reverse Cycle Air-Conditioner to Bed 1.
- *Wall Mounted Reverse Cycle Air-Conditioner to
Living Room.
- *TV Antenna.
- *Exposed Aggregate Concrete Driveway, in a Colour at
the Builder's Discretion.
- *Tile Finish to Alfresco and Porch.
- *Butted Paling Treated Pine Fencing to 1800mm High
With Metal Framed Single Gate, as per Plan.
- *Supply and Lay Builder's Selection Turf, 6m² Garden
Bed and Gravel to site as per plan.
- *Letterbox.
- *2.24m Wall Mounted Clothesline.